

# JungleFlasher TroubleShooting Guide



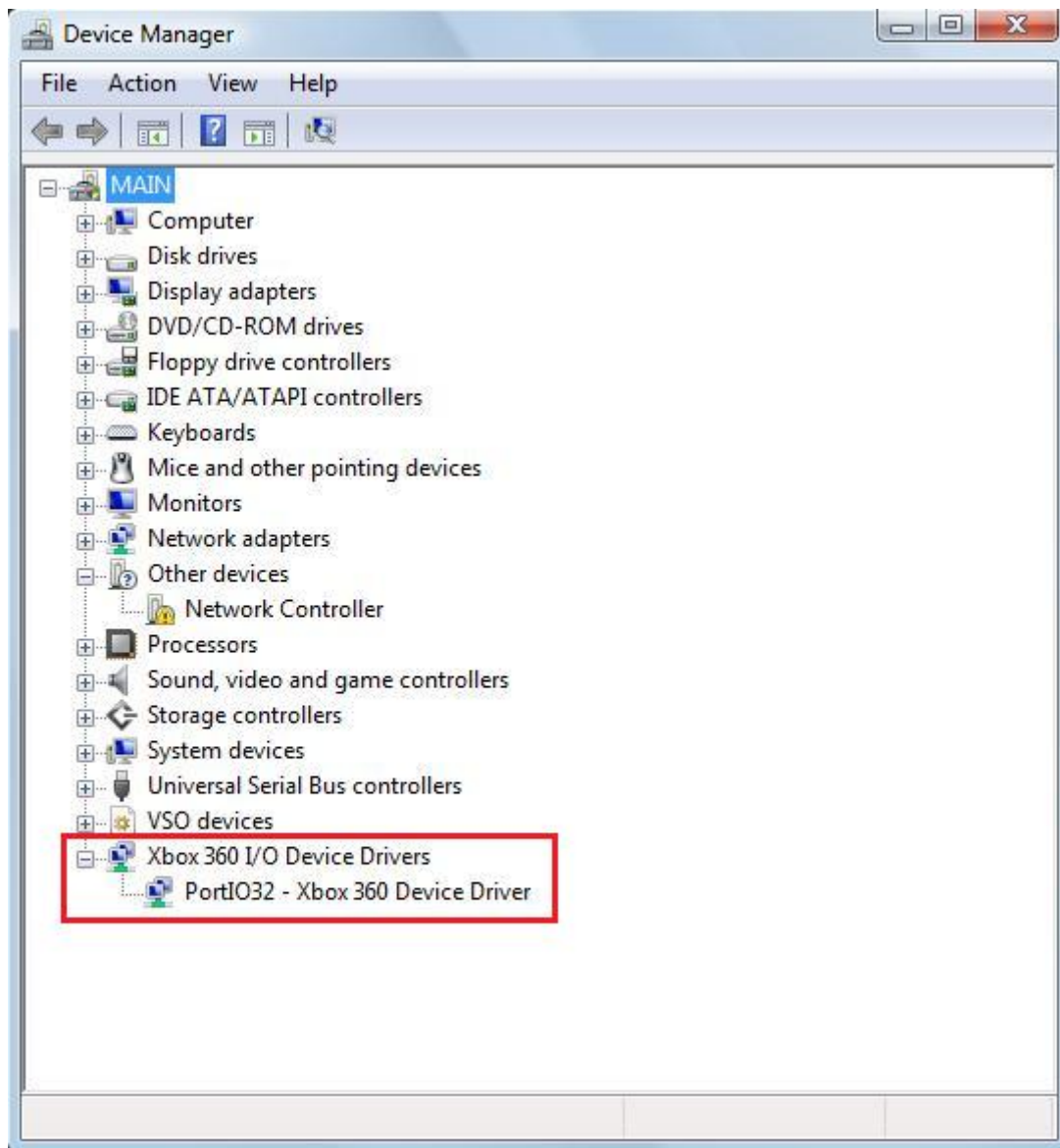
## PortIO 32.

### Why can't I detect my drive on one of the I/O Ports?

This is 32bit only, so if you are using 64bit system, the likelihood is, this will not work. This driver is included with the **JungleFlasher** download pack, see **PortIO32.exe** for Automatic Install, or the Manual Install folder and view the **PortIO ReadMe.txt**, this will give you instructions on how to manually install the **PortIO** drivers.

### To Check With Windows Vista:

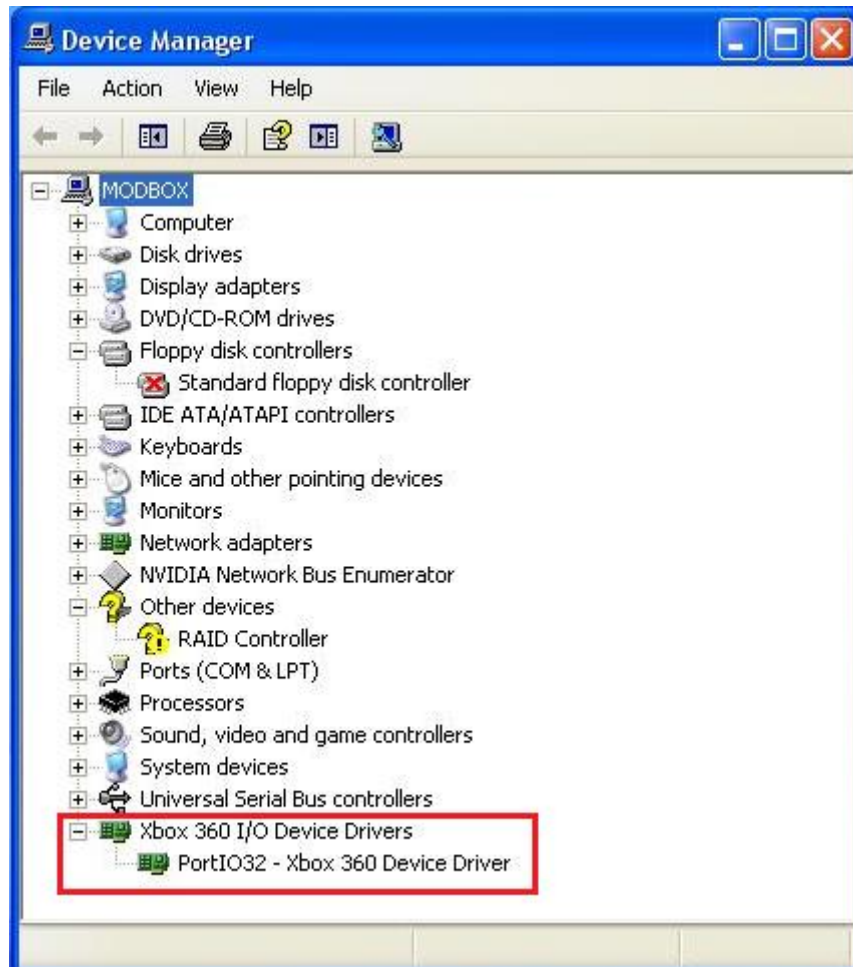
Click on the **Start** button, then Right Click on **My Computer** and select **Properties**. This should load up **Device Manager**; in there you should see something like the image below.



### To Check With Windows XP:

Right Click on **My Computer** then select **Properties**. This should bring up **System Properties**, click on the **Hardware** tab then select **Device Manager**.

This should load up **Device Manager**; in there you should see something like the image below.



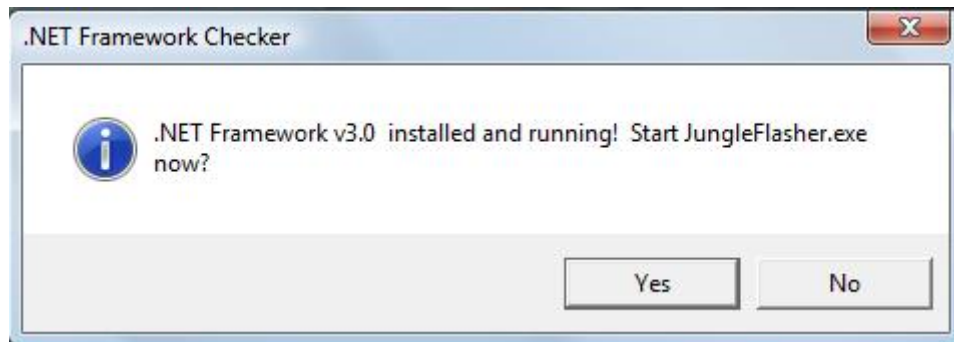
## **.NET Framework.**

### **What is .NET Framework?**

The **Microsoft .NET Framework** is a software framework available with several Microsoft Windows operating systems. It includes a large library of coded solutions to prevent common programming problems and a virtual machine that manages the execution of programs written specifically for the framework.

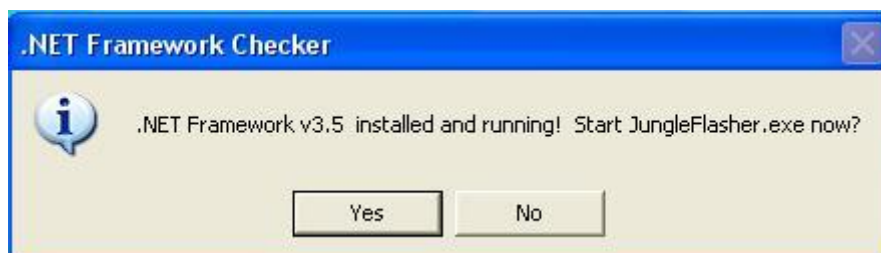
### **For Windows Vista:**

You should already have **.NET Framework 3.0** installed.



### **For Windows XP:**

You need at least **.NET Framework 2.0** or later.



With The **JungleFlasher** Download pack, you should see **`What.NET.exe`** this will confirm which **.NET Framework** that you have installed. If you are below the minimum required, please go to **Windows Update** and install at least the required **.NET Framework**.

# Chipsets.

## The Good and the Ugly!

First up, the Ugly Chipset, this is the one you really should avoid trying to use at all costs.

### Silicon Image Chipsets

If you have a Silicon Onboard Chipset it would be recommended that you consider using a different PC or a PCI SATA Controller.

The Others.

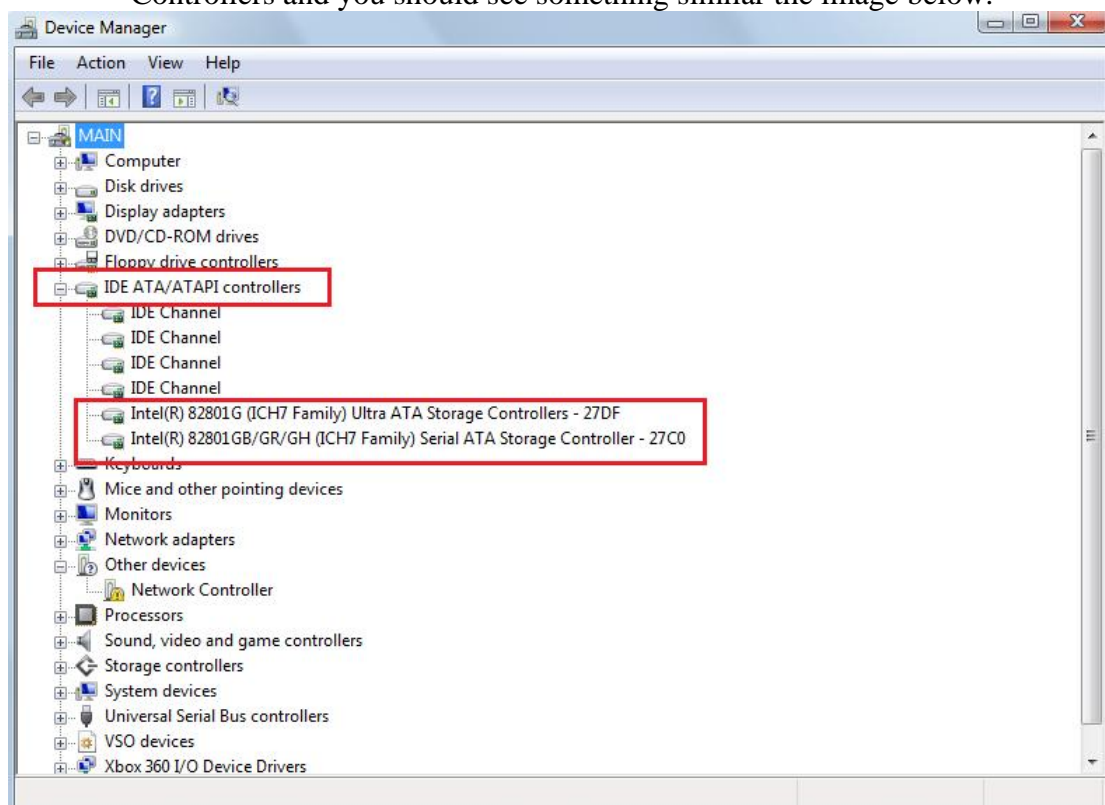
AMD, ATI, Intel, JMicron Chipsets, NVIDIA Nforce and Via.

## Which Chipset?

If you don't have a PCI SATA Controller and you want to know which chipset you have on your motherboard.

### To Check With Windows Vista:

Click on the **Start** button, then Right Click on **My Computer** and select **Properties**. This should load up **Device Manager**, select the + beside the IDE ATA/ATAPI Controllers and you should see something similar the image below.



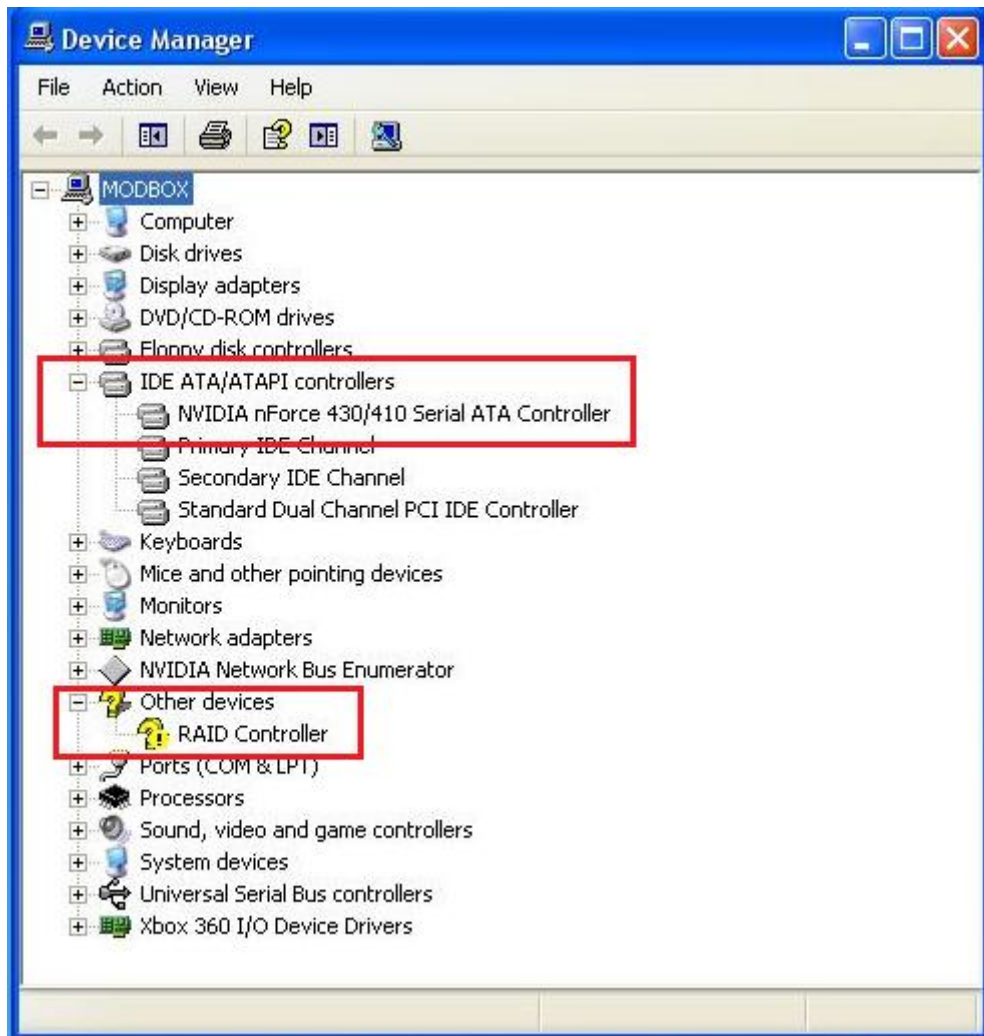
Please Note:

This image is for illustration purposes only, yours may appear differently.

### **To Check With Windows XP:**

Right Click on **My Computer** then select **Properties**. This should bring up **System Properties**, click on the **Hardware** tab then select **Device Manager**.

This should load up **Device Manager** select the + beside the IDE ATA/ATAPI Controllers and you should see something similar the image below.



Please Note:

This image is for illustration purposes only, yours may appear differently. Also, the RAID Controller is the VIA 6421 PCI Card with drivers uninstalled.

If all else fails, check your Computer or Motherboard Manual specifically the Southbridge Chipset.

**!!!NEVER RULE OUT THE POSSIBILITY OF A FAULTY SATA CABLE!!!**

Unfortunately, we can't give a definitive answer on every chipset being compatible. There are simply just too many motherboard/bios configurations for us to test.

## **Lite-On Bad Serial Data.**

### **Why do I keep getting this error?**

This is the error you are likely seeing.



If this is the case, there are several things you will need to check.

Are you probing the R707 hole?

Using the USB connection from your CK3/Xtractor, if so check the section below on installing the USB drivers and checking if they are installed.

Using the Serial cable, double check this is connected properly.

Is the tray half in? You can check the User Guide on how to do this. Without the tray half in, you will get this error.

Is the Probe/Spear connected properly, have the correct lights? Double check these connections.

Using a home-made? Well unfortunately we can't troubleshoot this for you, if you choose the home-made method it's your responsibility.

Never rule out the possibility of one of these cables being faulty. If you have tried all of the other checks, then try using alternative cables.

## Team Xecuter CK3 / Maximus Xtractor USB Drivers.

### We're in the Money!

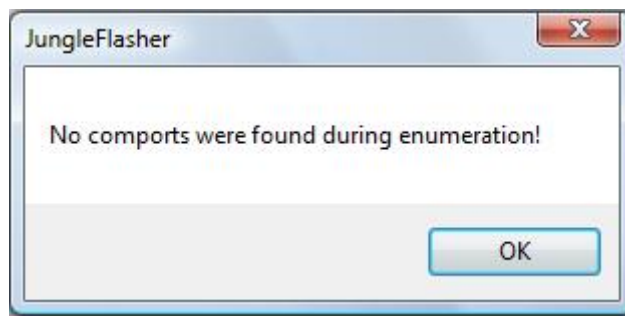
For Lite-On use only really.

Maximus Xtractor USB Drivers can be downloaded [HERE!](#)

Team Xecuter CK3 USB Drivers can be downloaded [HERE!](#)

Without these drivers installed, you will likely not be able to detect your correct COM Port in **JungleFlasher** and will likely result in "Bad Serial" message.

Without Onboard COM (Serial) Port, or USB Drivers installed, you will likely see the message below.



When using the CK3 to flash Samsung, BenQ and Lite-On drives, it's important to note the colour of the CK3 should be **blue** instead of **red**. Red means that you have the CK3 in mode-b, likely leading to drives responding incorrectly.

When using the Xtractor, this has a built-in Mode-B which only enables with Hitachi drives. So, if you find you're having problems, to bypass the Xtractor's Mode-B hold down the Eject button then power on. You should then be able to use **JungleFlasher's** Send Mode-B option.



## Hitachi GDR3120

### The Myth. The Legend!

This is only a small note, but many people seem to think Hitachi's are flashed similar to other drives. Thus try to load the firmware and spoof it, like the others in the **Firmware Tool 32** tab.

This isn't the case, when using **JungleFlasher** to flash your Hitachi drives, most of the steps are done automatically to prevent user error. It may take you to the **Firmware Tool 32** tab after it **dumps** your firmware, but this is more just so you can confirm that your key is in fact, a valid key. You don't need to load the Target Firmware and spoof it. You may notice that the Hitachi drive has **Sectors** one of these sectors contains the drive information, another the key. These remain untouched unless you **Flash Key Data** or **Flash Spoof Data**.

If you're flashing the drive from **Stock** then you need to use **Flash iXtreme** option, this will automatically dump and write your firmware to the relevant sectors.

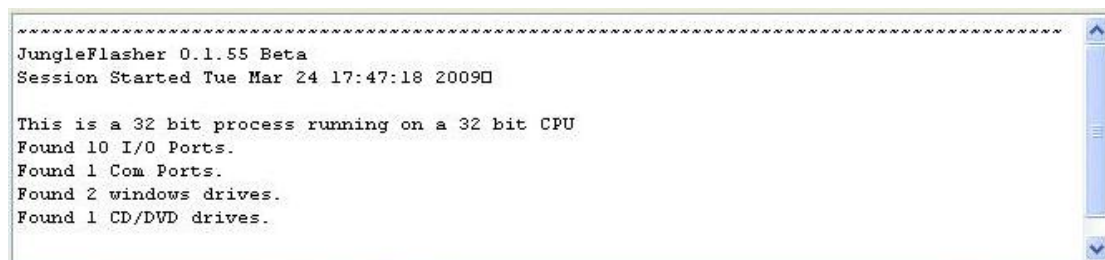
If your drive has been previously flashed, you will first need to **Restore Firmware** on this drive then proceed to **Flash iXtreme**. During this, if something has been done incorrectly **JungleFlasher** will prompt you.

## Port Cycle.

### I know my drive should be here somewhere!

A lot of the time, the term **Cycle Ports** is said and most of the time, people aren't quite sure what we meant by that. So, on the **DVDKey 32**, **MTKFlash 32** and **Hitachi GDR3120 tabs**, you will see a section called **Port Properties**.

The image below will tell you how many I/O Ports you have. You can find this in the **Running Log** at the bottom of **JungleFlasher** when you first load it.

A screenshot of the 'JungleFlasher' application's 'Running Log' window. The window has a title bar and a scrollable text area. The text inside the log reads: 'JungleFlasher 0.1.55 Beta', 'Session Started Tue Mar 24 17:47:18 2009', 'This is a 32 bit process running on a 32 bit CPU', 'Found 10 I/O Ports.', 'Found 1 Com Ports.', 'Found 2 windows drives.', and 'Found 1 CD/DVD drives.'.

```
=====
JungleFlasher 0.1.55 Beta
Session Started Tue Mar 24 17:47:18 2009

This is a 32 bit process running on a 32 bit CPU
Found 10 I/O Ports.
Found 1 Com Ports.
Found 2 windows drives.
Found 1 CD/DVD drives.
```

Then, you should be able to use your cursor keys (↑ and ↓) or the mouse to go through your different ports. You will see by the images below what you want to find.

I/O Port  
0x09F0

Port Properties  
I/O Address: 0x09F0  
Type: SATA  
Channel: Primary  
Position: Master  
Device: NVIDIA nForce 430/410 Serial ATA Controller

Drive Properties  
Vendor: No Drive Detected!  
Name:  
F/W Rev:  
Reserved:

That's not it.

I/O Port  
0x0970

Port Properties  
I/O Address: 0x0970  
Type: SATA  
Channel: Secondary  
Position: Master  
Device: NVIDIA nForce 430/410 Serial ATA Controller

Drive Properties  
Vendor: No Drive Detected!  
Name:  
F/W Rev:  
Reserved:

That's not it either.

I/O Port  
0x01F0

Port Properties  
I/O Address: 0x01F0  
Type: IDE  
Channel: Primary  
Position: Master  
Device: Primary IDE Channel

Drive Properties  
Vendor: Maxtor  
Name: 6E040L0  
F/W Rev: NAR61590  
Reserved: E1FHNZAE

Nor That.

I/O Port  
0xC800

Port Properties  
I/O Address: 0xC800  
Type: SATA  
Channel: Primary  
Position: Master  
Device: RAID Controller

Drive Properties  
Vendor: PBDS  
Name: VAD6038-64930C  
F/W Rev:  
Reserved:

**BINGO!**

Now, you have cycled your ports to find the drive you want. Good job!

Another thing to note here, notice that the Channel and Position vary from Primary to Secondary and Master to Slave. It's recommended that you try to use a Primary Master port.

## The VIA Drivers.

### Why won't they just go away!

This step is more important for the Lite-On drive and the notorious VIA Freeze. This is caused when the Lite-On erase command is sent to the drive and during this step; the drive goes from a perfectly normal drive, to one without firmware. The VIA drivers don't know how to react to this, so they react the way windows knows best, normally resulting in your PC freezing.

So, if you want to remove the drivers, you will first need to know where they are.

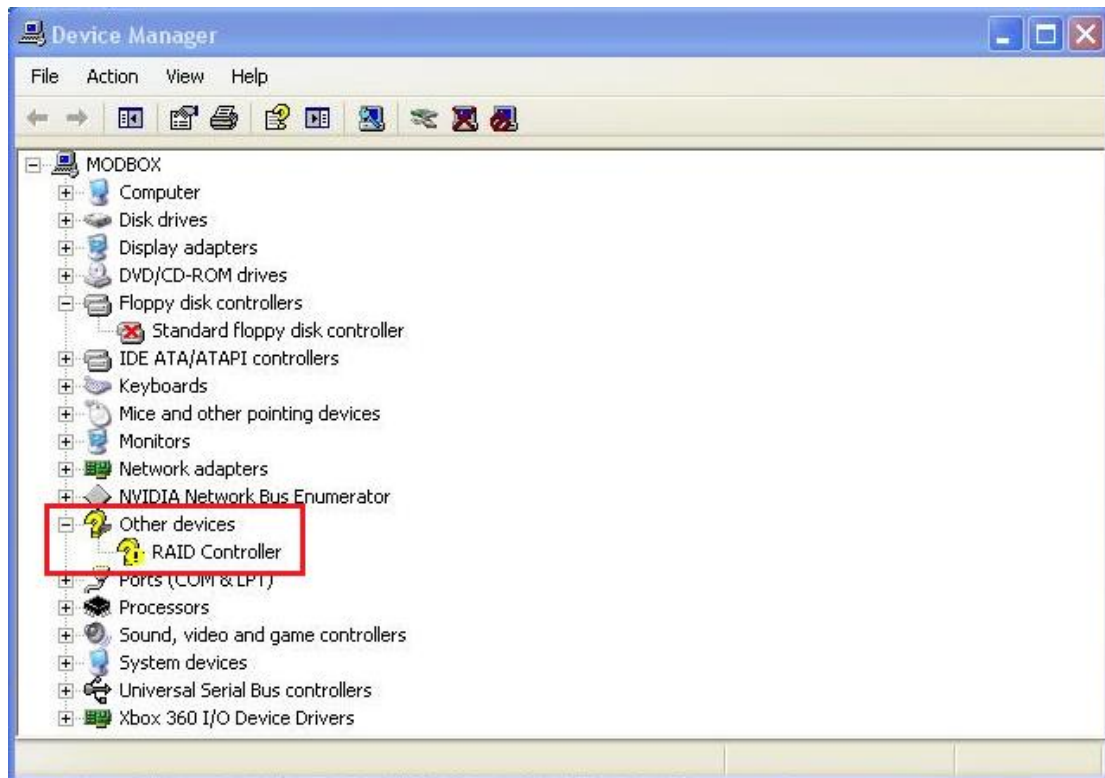
So, go to **Device Manager** and locate the **VIA Card**. It should be in the **SCSI and RAID Controllers** section. It's normally called **VIA VT6421 RAID controller**, but it has also shown up as **RAID Controller** and **VIA 3429 RAID Controller** (if its 3429, it's a good indication that the drivers are wrong, happened after the 550B+ drivers, roughly).

Now you have found it, you want to Right Click - > **Properties** and locate **Driver Details**. In here it should give the location of the driver which this card is using. Write this down somewhere, then close this box and Right Click - > **Disable** the VIA Card.

Then, go to the directory which you have written down and either delete the file (also from recycle bin). Go back to **Device Manager** then Right Click - > Enable the VIA Card.

It should then show up in **Device Manager** as **! RAID Controller**.

Like This.



## Xbox 360 DVD Player.

### Why is my Xbox 360 only playing DVD's, **JungleFlasher** what have you done?!?

If you have flashed your drive and to your mind successfully, but then put your drive back and play a game then you get the **Please Insert This Disc Into A 360 Console** error. The chances are that you did not spoof the firmware properly.

If the key is 77777777777777777777777777777777,  
55AA55AA55AA55AA55AA55AA55AA55AA,

00000000000000000000000000000000 or

FFFFFFFFFFFFFFFFFFFFFFFFFFFFFFFFFFFF.

Then you haven't spoofed your key. When using **JungleFlasher** check the screenshots below to confirm your key is spoofed properly.

Source:

Source	Inquiry	Identify	Drive Serial
E:\60436282705\Dummy.bin			
Vendor	Model	Rev	Firmware Type
Lite-On	DG-16D2S	74850	DVDKey32 extract
OSIG: PLDS DG-16D2S 7485			DVD Key @ 0xA030 6CC5A89C6B3110892234096E2825937F

Target:

Target	Inquiry	Identify	Drive Serial
E:\ix1.5\JungleFlasher_Firmware_Pack-Team_Jungle\ix151-liteon.bin			
Vendor	Model	Rev	Firmware ver:
Lite-On	DG-16D2S	74850	iXtreme v1.51-12X
OSIG: PLDS DG-16D2S 7485			DVD Key @ n/a 6CC5A89C6B3110892234096E2825937F

Notice that both DVD-Key's match up correctly? If this is the case, your Xbox 360 will play games. If they don't it's a DVD-Player.

You will need to go back and pray to the firmware gods that you have a backup of your original firmware. You can then load that into the Source firmware and load the appropriate Target Firmware and click the button below.

Spoof Source to Target

## **Xbox 360 1 Red Light.**

### **I have a baby red light of death, arghhhh!!!**

This error is also known as E64, this is DVD-ROM problem, normally a fault in the firmware.

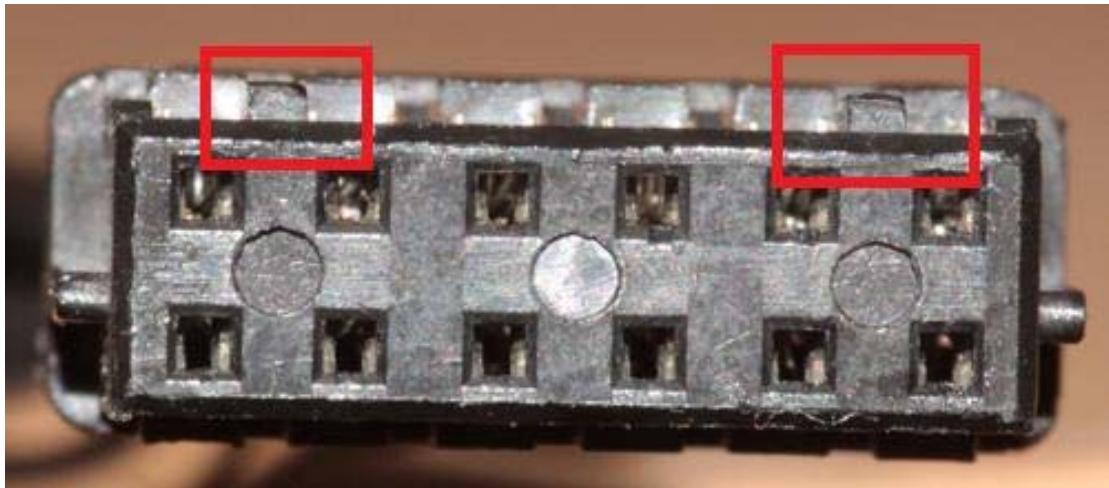
This could be that the console had a different drive originally and you haven't spoofed the firmware properly. Or you have tried to spoof the firmware and mistakenly, for example wrote a BenQ firmware to a Samsung drive.

Did the write verify ok when you wrote the firmware to the drive? If not, attempt to write the firmware again to make sure it writes ok.

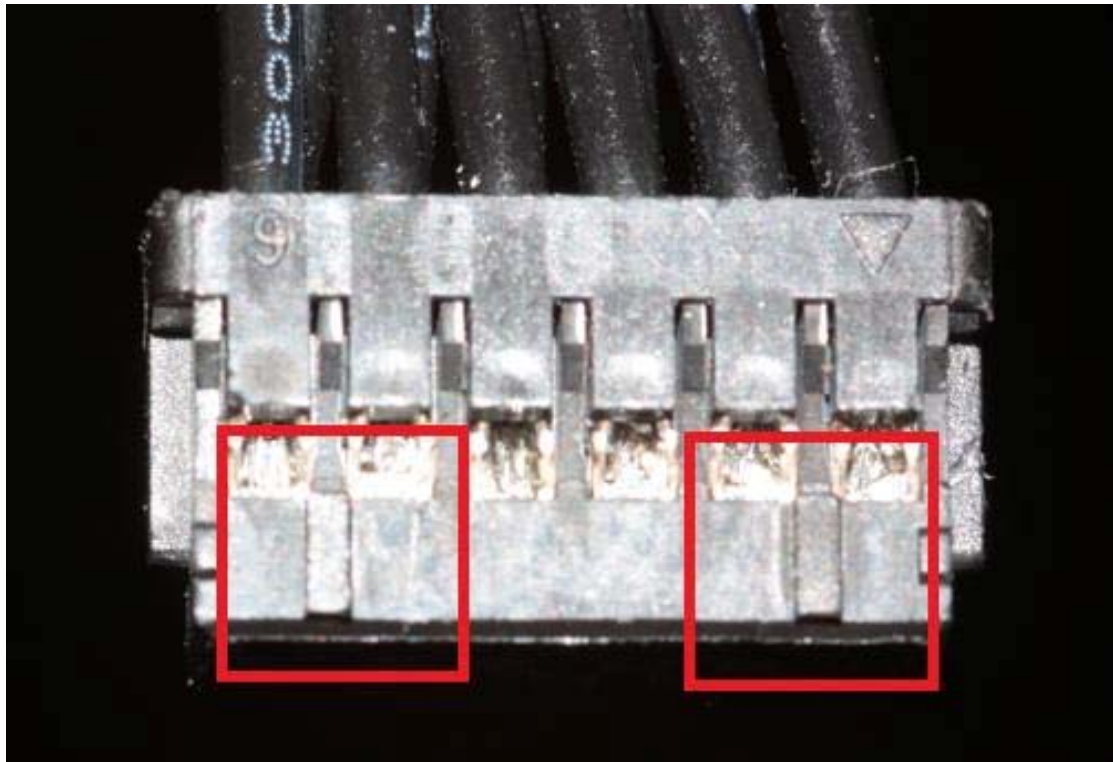
## **Connections.**

### **Is it really possible to put these in backwards? Apparently so...**

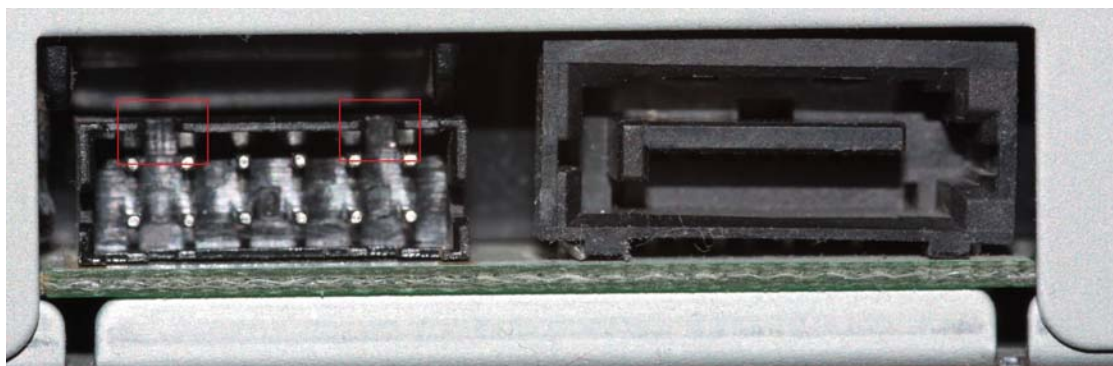
The Power Cable:



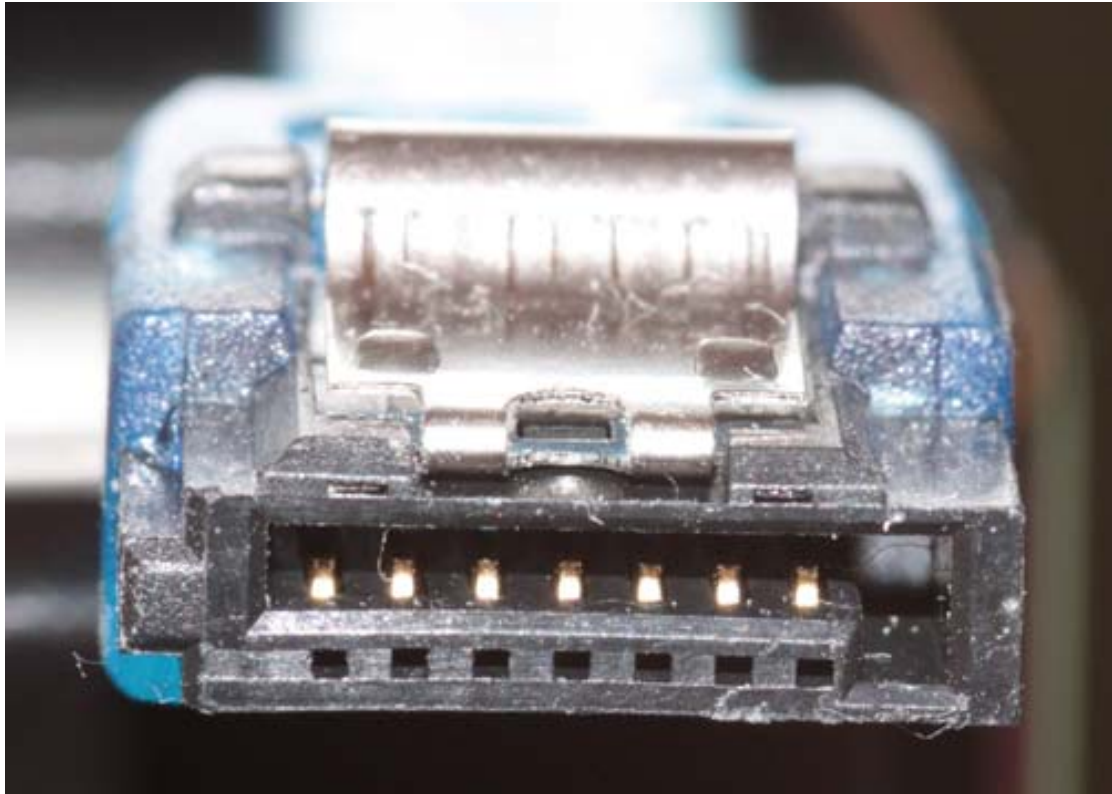




Please notice the 2 notches, blatantly marked in the red boxes. These notches fit neatly into the 2 slots in the image below. If you put these in the wrong way the chances are, you're going to see some smoke!



Also note that the SATA cable is an L-Shape.



Please make sure that ALL connections are in the correct way!

### **IRC Support Channel.**

#### **So, where do you cool kids hang out?**

If you're still in need of help, there is **#JungleFlasher** on **EFnet** (IRC).

You can download the latest version of mIRC from [Here](#). Fill in the basic information required, then on the server status box, you want to type **/server efnet.demon.co.uk** (for a full list of servers check [Here](#)). Then it should connect to your chosen you will be prompted to join a channel, type **#JungleFlasher** in there. If not, on the server status box, type **/join #JungleFlasher**. It should then join the channel where you will be able to talk to us and get support.

### **Donate To Team [JungleFlasher](#).**

#### **We Work Hard, Right?**

Whilst we aren't forcing you to give money to use **JungleFlasher** or for the development of the firmware, a small donation goes a long way to helping the team continue with the hard work that the team put in, from Developing the Firmware, to making guides like this.

If you would like to donate, you will see a link/button on the **Firmware Tool 32** tab, click that and follow the link.